

SEPTEMBER IS SICKLE CELL DISEASE AWARENESS MONTH

Join the community at one or all of these events

saturday | september 6 2008

Rally for Sickle Cell Disease Awareness Month "Unveil Sickle Cell"

in collaboration with the City of Los Angeles, Councilmember Bernard Parks

location: leimert park • corner of crenshaw and vernon • los angeles

time: 12:00 pm - 3:00 pm

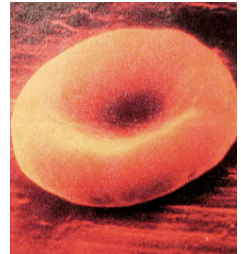
saturday | september 13 2008

Dinner and Dance at Cafe Laneaux

location: 8501 South Vermont Avenue • los angeles, ca 90044

time: 6:00 pm - 10:00 pm

r.s.v.p. no later than august 30th



sunday | september 14 2008

'Celebration Service: Rejoicing Life - Unveiling Sickle Cell'

location: 1st Presbyterian Church of Los Angeles

1809 West Blvd. • los angeles, ca 90019

time: 11:00 am service, presided by Rev. Calvin Moore, II

saturday | september 20 2008

'Day of Empowerment' at Childrens Hospital Los Angeles

location: 4650 w. sunset blvd. • los angeles, ca 90027

time: 8:30 am - 4:00 pm

saturday | september 27 2008

'Meet and Greet' at the California African American Museum

in collaboration with Senator Mark Ridley-Thomas

location: 600 state drive • exposition park • los angeles, ca 90037

time: 11:00 pm - 4:00 pm

r.s.v.p. no later than september 13th



For more information, please contact:

Pat Corley

patcorle@usc.edu | 818.377.5120

Sponsored by:

The Sickle Cell Disease Adult Support Group
of Southern California

Cayenne Wellness Center • www.cayennewellness.com

The Sickle Cell Disease Foundation of California • www.scdfc.org

DID YOU KNOW:

Sickle cell anemia affects millions of people throughout the world.

In the United States, it affects approximately 120,000 people, most of whose ancestors come from Africa. The disease occurs in approximately 1 in every 500 African-American births and 1 in every 900 Hispanic American births.

Approximately 2 million Americans, or 1 in 12 African Americans, and 1 in 16 Hispanic Americans carry the sickle cell trait.